

x1R Smart



Rim version SINGLE ACTION with quick release via the handle

Version 3 DEADBOLTS. Projection 3. Centre distance 37

MOTORIZED ELECTRONIC LOCK SPECIFICALLY DESIGNED FOR SECURITY DOORS, RIM VERSION SINGLE ACTION



Control for security doors

X1R SMART is a motorised electronic lock specifically designed for security doors. It combines the solidity of a mechanical lock with the versatility of electronic control via smartphone, RFID tag or keypad.

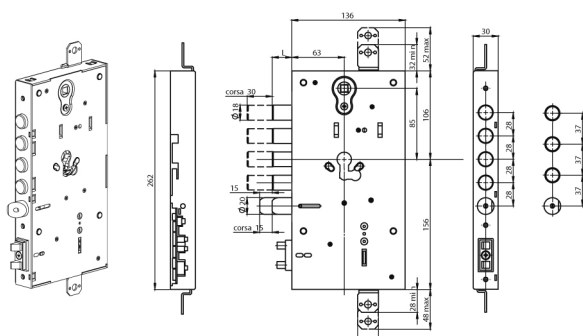
Choose your preferred credential

The security doors equipped with x1R Smart lock offer to the user the possibility of accessing with the app from a Smartphone and with RFID devices. It is also possible to have a numeric keypad and fingerprint reader on the door, to allow access to the user without having to use any physical credentials.

Product features

- Opening via PIN code and finger print.
- Motorised opening and closing of deadbolts and latchbolt.
- Quick opening from inside the room with "Single Action" handle (optional).
- Opening via European profile cylinder (EN1303, DIN 18252).
- Light function (latch only) programmable by the user for certain days and time slots.
- Memorize up to 300 users credentials
- Records the last 1000 events
- Battery-operated device with charge status detection
- Wake up by RFID card detection or phone (patented)
- Low energy consumption device
- Real Time Clock/Calendar
- Light and acoustic signals
- Permanently open mode (office mode) without extra battery consumption
- Block the Standard Users allowing access only to VIP users
- Programming and software updates by Argo app on iOS and Android devices

x1R Smart Rim version SINGLE ACTION with quick release via the handle



DIMENSIONS

Deadbolts in chrome-plated steel \varnothing 18 mm, projection 30 mm
Reversible latchbolt \varnothing 20 mm, adjustable projection.
Handle follower 8 mm for latchbolt operation.

cod. **0006990337550**

ACCESS CREDENTIALS

- Apple Watch
- Badge
- Bracelet
- Numeric Keypad
- Fingerprint
- Keyfob
- Smartphone

COMMUNICATION INTERFACE

- Check the communication interfaces of lock's compatible readers

CERTIFICATIONS

- EN 14846:2008 with the classification |3|X|9|E|0|P|7|1|3|
- EN 179: 2008 with the classification |3|7|7|B|1|4|5|2|3|

Technical features

FIRMWARE

ARGO

RELEASE

2.0

POWER UNIT

Battery operated with 6 1.5 VDC alkaline batteries Power supply from 8 to 30 VDC 30W Consumption at rest 0.05A – Maximum (forced) 2.5A

ESTIMATED BATTERY LIFE

Up to 3 years, up to 30.000 opening. The figure is dependent on the mode and environment of use and the options activated.

PRODUCT COMPATIBILITY

Top and bottom attachments for rods for additional closures.

Set up for M6 passing screws for cylinder protection fixing. Reversible door sensor with adjustable projection, including alignment device. Rim fixing with 4 passing screws or screw nuts.

Inox version on request.

MOUNTING

- On armored door

ENVIRONMENTAL FEATURES

- IP44

WORKING TEMPERATURE

$-20^{\circ}\text{C} \div +70^{\circ}\text{C}$

STORAGE TEMPERATURE

$-25^{\circ}\text{C} \div +75^{\circ}\text{C}$

PACKAGE

Lock, door sensor, cylinder fixing screws, assembly instructions

ACCESSORIES (NOT INCLUDED)

Smart Readers for x1R

Power supply

Concealed lead cover

Compatibility with ISEO applications

ARGO	LUCKEY	LSA	V364
•	•	-	-
